



tilebar LVT

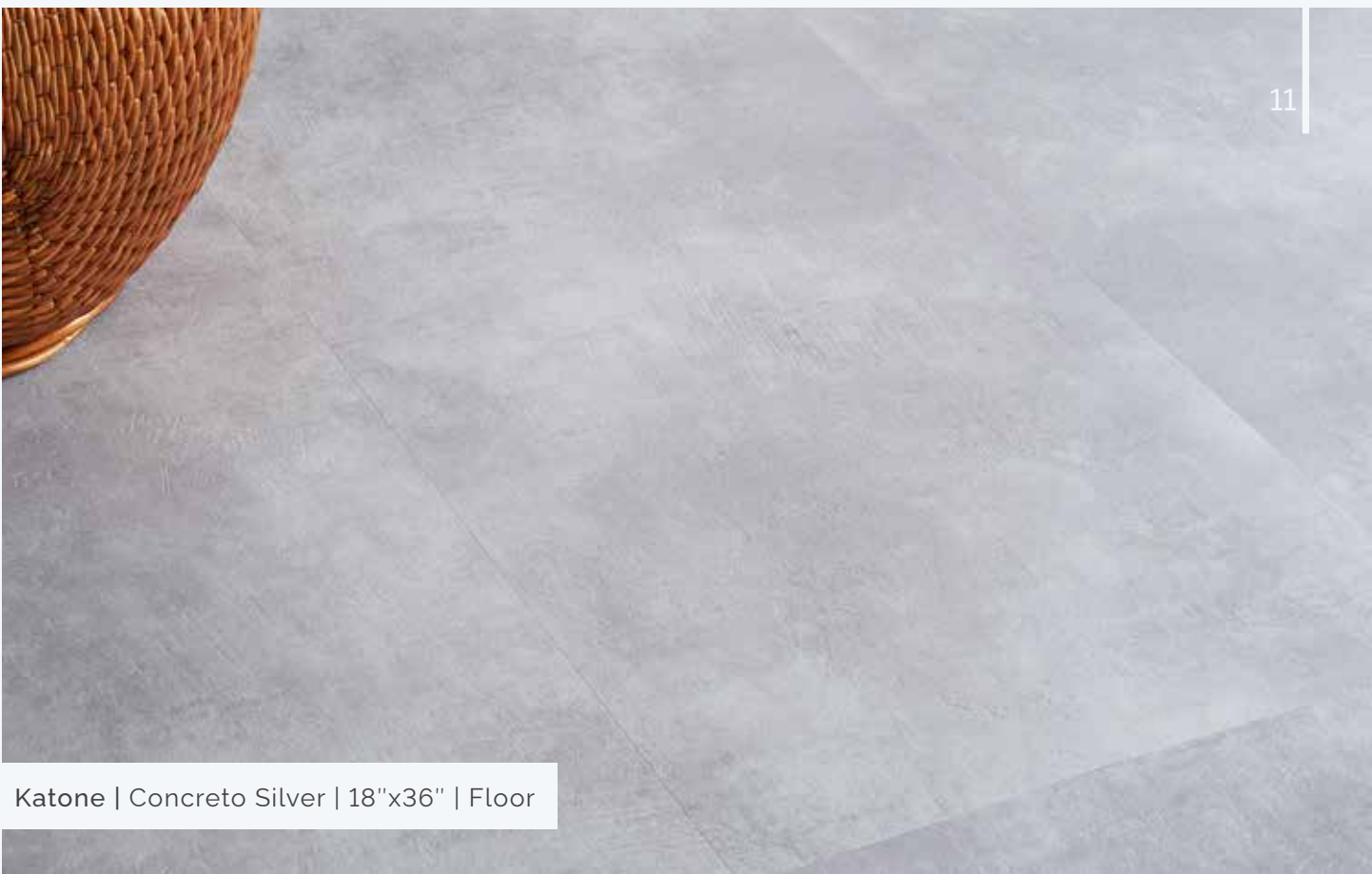
A DIVISION OF TILEBAR

KATONE | Heavy Commercial

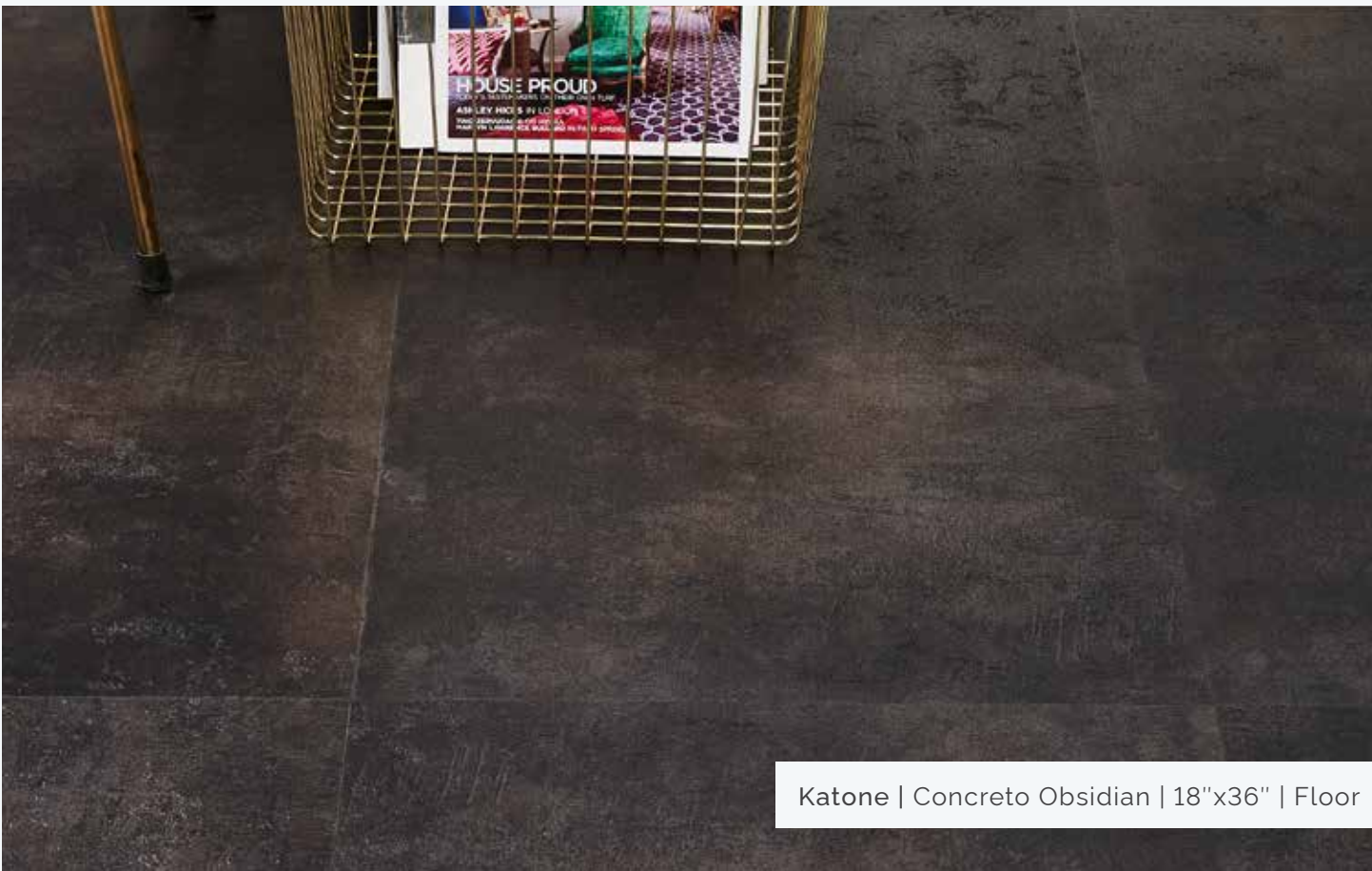


tilebar_{LVT}

Katone | Concreto Grafito | 18"x36" | Floor



Katone | Concreto Silver | 18"x36" | Floor



Katone | Concreto Obsidian | 18"x36" | Floor

Katone | Concreto Pearl | 18"x36" | Floor



Katone | Concreto Beige | 18"x36" | Floor



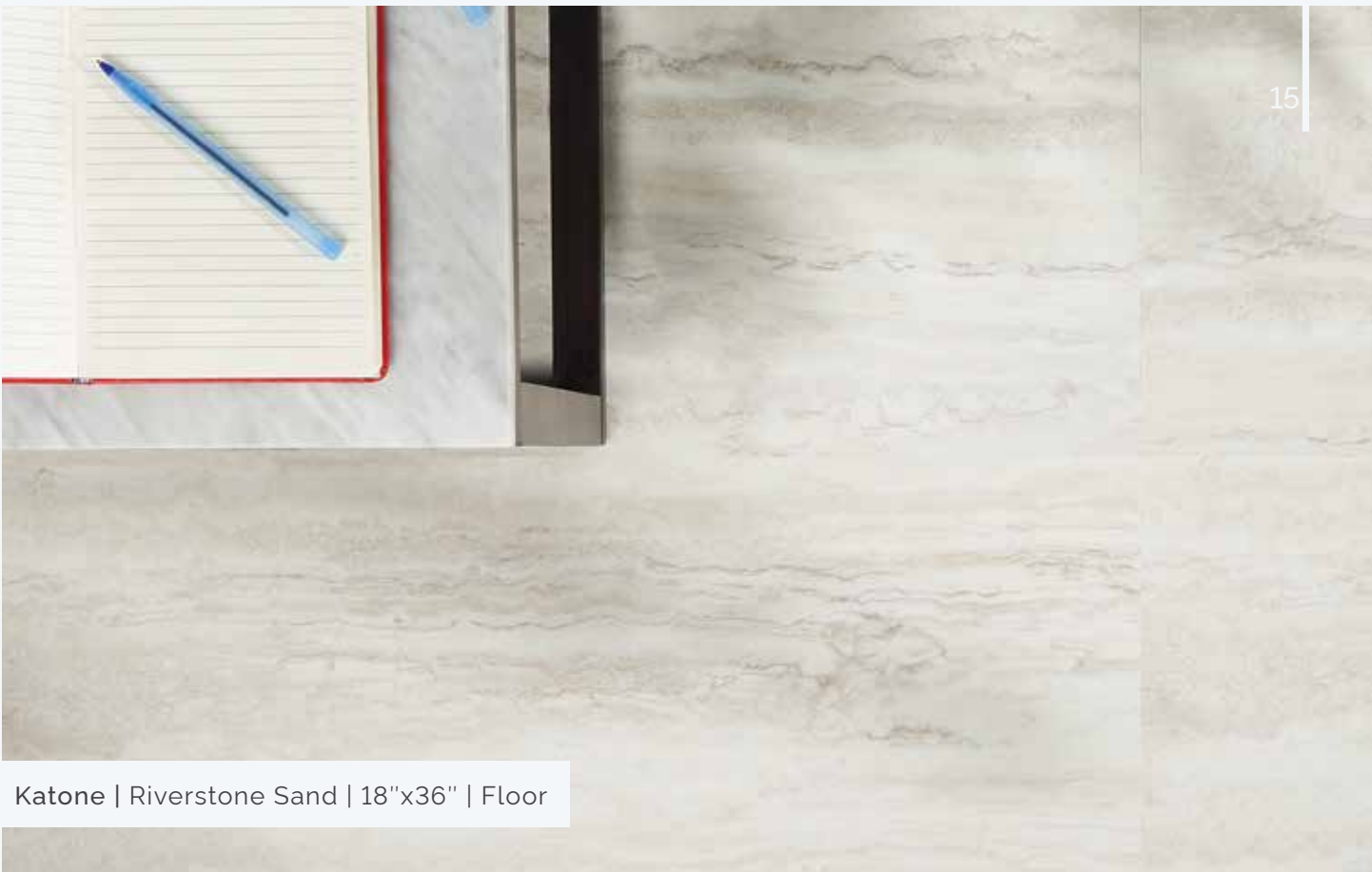
tilebar LVT

Katone | Concreto Steel | 18"x36" | Floor



tilebar_{LVT}

Katone | Riverstone Camel | 18"x36" | Floor



Katone | Riverstone Sand | 18"x36" | Floor



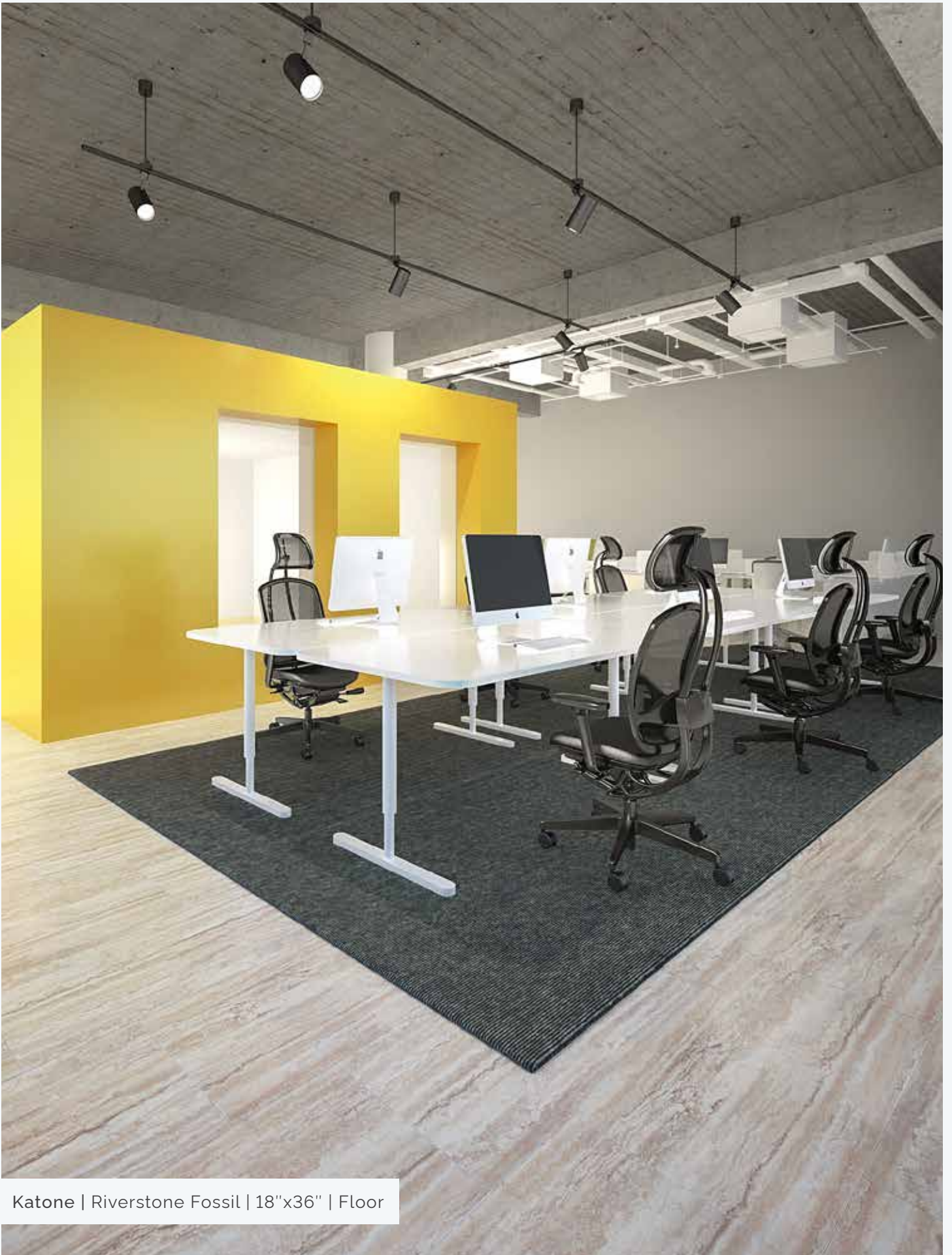
Katone | Riverstone Crema | 18"x36" | Floor



Katone | Riverstone Azulene | 18"x36" | Floor



Katone | Riverstone Espresso | 18"x36" | Floor



Katone | Riverstone Fossil | 18"x36" | Floor

18

Katone | Chauny Marble Medium Beige | 18"x36" | Floor



Katone | Chauny Marble Dark Gray | 18"x36" | Floor



Katone | Chauny Marble Dark Beige | 18"x36" | Floor



Katone | Chauny Marble Medium Gray | 18"x36" | Floor

Katone | Highland Oak Brined | 6"x48" | Floor

Katone | Acacia Brown Sugar | 6"x48" | Floor



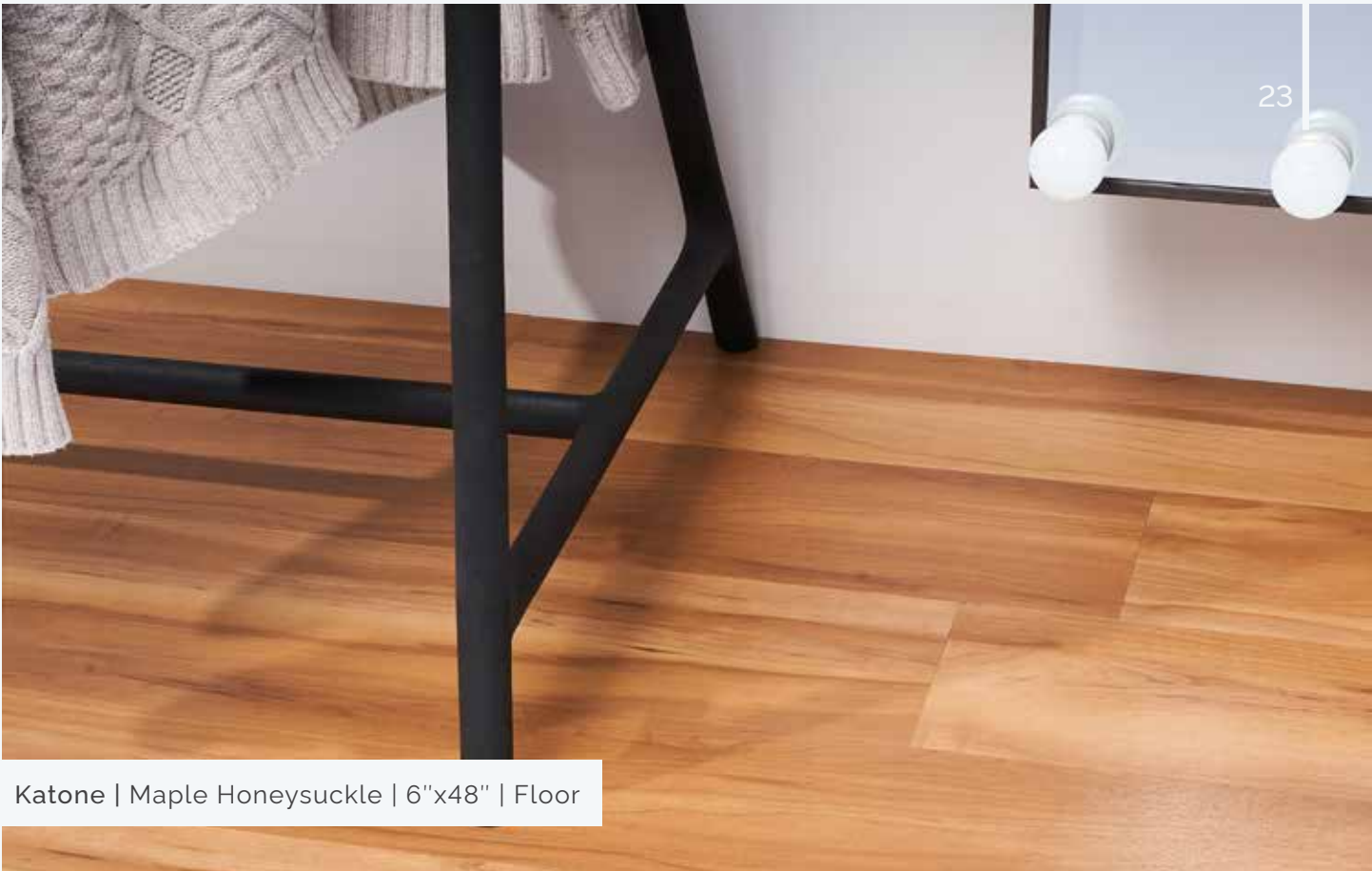
tilebar^{LVT}

Katone | Cantal Oak Taos | 6"x48" | Floor



tilebar_{LVT}

Katone | American Cherry Legacy | 6"x48" | Floor



Katone | Maple Honeysuckle | 6"x48" | Floor



Katone | Wash Oak White | 6"x48" | Floor



Katone | Enchanted Oak Drift | 6"x48" | Floor



Katone | Modern Oak Blanched | 6"x48" | Floor



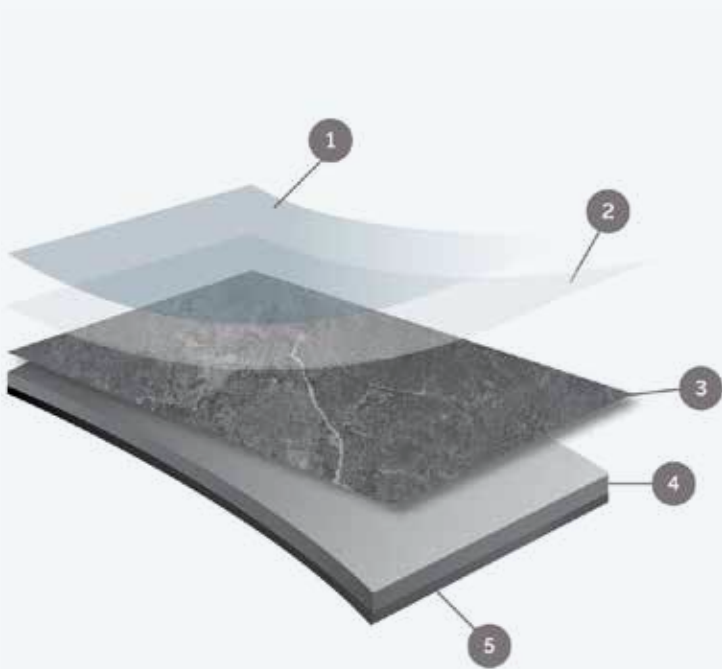
Katone | Heartwood Ash | 6"x48" | Floor



Katone | Aged Oak Peppercorn | 6"x48" | Floor

IKATONE Heavy Commercial

Katone bridges the gap between luxe natural flooring and modern-day maintenance. After we researched the market, tested various versions, we came up with an above-industry standard option that won't break the bank. With every piece, you get to experience the beauty of wood or stone with an unmatched ability to withstand heavy duty traffic and use.



- 1. ProTx™**
Our trademarked UV cured urethane top coat with ceramic beads custom engineered by TileBar. Allows Katone to maintain its scratch resistance, stain resistance and water resistance.
- 2. 28 Mil Wear Layer**
Heavy Commercial PVC that extends the life and durability of the floor. **Katone is 40% stronger than the industry standard.**
- 3. High Definition Decorative Print Film**
Available in wood, stone and concrete looks that elevate any design aesthetic.
- 4. Commercial Core**
Katone has a fiberglass layer added to the commercial core for superior dimensional and dynamic stability. Allows for heavy foot traffic and heavy roll and loads.
- 5. Textured Backing**
Made from PVC, the backing is textured to allow product to grip and easily adhere to surfaces for easy installation.

| EASY-TO-MAINTAIN

Thanks to the uniquely formulated **ProTX** protective layer, our LVT is impenetrable by liquids, scratch-resistant, and simple to clean. No more fear of spills that stain or ruin floors.

| SUPERIOR THICKNESS

Going above the 20mil industry standard, our wear layer measures 28mil, which means that daily wear and tear won't have long-lasting impacts.

| ENVIRONMENTALLY SOUND

Katone is not only sustainably produced but can be recycled at the end of its lifecycle.

| HEALTH-FRIENDLY

Katone is safe for asthma and allergy sufferers alike. Low VOC, no ortho-phthalates, heavy metals, fly ash, flame retardants, or antimicrobial pesticides present in materials. **FloorScore Certified, and ISO 9001 + 14001 certified.**

| RICH DESIGN OPTIONS

Realistic prints of natural materials will fool the eyes into thinking the real thing lays just below your feet.

I KATONE Heavy Commercial

I TECHNICAL DATA

28 MIL Specifications	
In Stock and Ready to Ship	
Available Sizes:	18" x 36" 6" x 48"
Construction:	Heavy Duty Luxury Vinyl Tile
Classification :	ASTM F1700 Class III, Type B
Total Thickness:	2.5mm (0.100")
Wear Layer Thickness:	28mil (0.70mm)
Edge Treatment:	Micro-Bevel
Finish:	ProTx™
Colors:	26
Application Type:	Commercial Glue Down
Adhesive:	Tilebar Trowel or Tilebar Roll
Backing Color:	Black
Pieces per Carton:	8 pcs (18x36) 18 pcs (6x48)
Weight per Carton:	31.3 lbs
Square Feet per Carton:	36 ft
Cartons per Pallet:	48 (18x36) 66 (6x48)

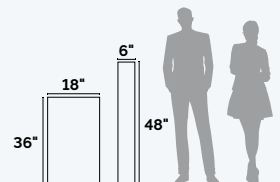
40 MIL Specifications	
Available By Special Order	
Available Sizes:	18" x 36" 6" x 48"
Construction:	Heavy Duty Luxury Vinyl Tile
Classification :	ASTM F1700 Class III, Type B
Total Thickness:	3.0mm (0.120")
Wear Layer Thickness:	40mil (1.0 mm)
Edge Treatment:	Micro-Bevel
Finish:	ProTx™
Colors:	26
Application Type:	Commercial Glue Down
Adhesive:	Tilebar Trowel or Tilebar Roll
Backing Color:	Black
Pieces per Carton:	8 pcs (18x36) 18 pcs (6x48)
Weight per Carton:	37.37 lbs
Square Feet per Carton:	36 ft
Cartons per Pallet:	40 (18x36) 54 (6x48)

Applications:

Commercial Spaces: Educational Institutions, Healthcare, Senior Living, Hospitality, Retail, Workplace
Residential: Multi-Family, Single Family

I TESTING SPECIFICATIONS

28 MIL + 40 MIL	
Flexibility (ASTM F137):	Passes - 1" Mandrel - No Crack/Break
Dimensional Stability (ASTM F2199):	Passes - Max 0.020 in/lin ft
Squareness (ASTM F540):	Passes - Max 0.010"
Static Load (ASTM F970 mod.):	Passes - Modified Test (anything beyond 250 PSI) = 2,000 PSI; Residual Indent \leq 0.005"
Residual Indentation (ASTM F1914):	Passes - $<$ 8% Avg / 10% Single Value
Flooring Radiant Panel (ASTM E648):	Passes - Class 1; \geq 0.45 watts/cm ²
Smoke Density (ASTM E662):	Passes - \leq 450
Slip Resistance (ASTM D2047):	Passes - SCOF \geq 0.6
Resistance to Light (ASTM F1515):	Passes - $\Delta\Sigma \leq$ 8.0
Chemical Resistance (ASTM F925):	Excellent
Resistance to Heat (ASTM F1514):	Passes





tilebar_{LVT}

| WHY TILEBAR LVT?

Tilebar LVT has a **ProTx™** UV-cured urethane topcoat layer that provides good to excellent protection against scuffs, scratches, stains and chemicals. With many design options available, Tilebar LVT can replicate the look of wood, stones, and abstracts, at a more affordable product and installation cost, and better performances in areas with moisture. Tilebar LVT is easier to clean and maintain compared to soft surface products, making it a popular choice for healthcare, education, corporate, hospitality, retail and other commercial and residential applications.

| WHY KATONE?

The Katone Collection innovatively combines texture, color, and pattern to create a product that allows customers to express any vision. Our product collection includes high definition wood and stone visuals. The combination of Katone's **ProTx** UV-cured top coat finish, which provides industry leading durable, 28mil wear layer, and is available on special requests with a 40mil wear layer, and fiberglass layer provides unmatched dimensional stability, resulting in an LVT solution that can be used with confidence in heavy traffic commercial spaces and even residential applications.

| WHY COMMERCIAL APPLICATIONS?

Katone was designed and engineered for heavy traffic commercial environments the **ProTx** UV-cured urethane provides superior scuff, scratch, stain, and chemical resistance for all commercial flooring applications. It is easy to clean and maintain, and with either a 28mil or 40mil wear layer, will last the test of time in commercial spaces, providing a great return on your investment. Katone can be installed with 2 adhesive options that perform in areas with high moisture spaces. Katone was engineered to provide peace of mind to all key influencers in the decision-making process. We even added a fiberglass layer to provide industry leading dimensional stability.